

**„Die Farben der Schöpfung“  
Katholische Kirche St. Konrad,  
Berlin-Falkensee**

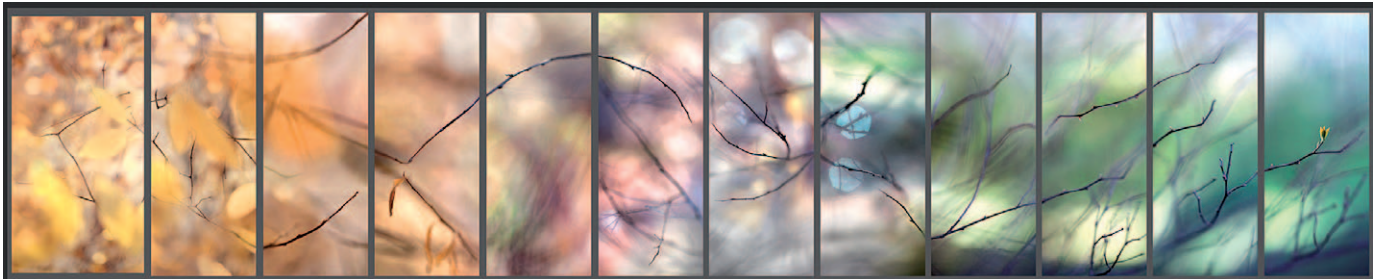
To create art for the new glass wall between the old church and the new extension involved several challenges. The wall is a connection between the old and the new architecture. The twelve meter long glass wall is also in a dialogue with the much smaller old stained glass windows on the opposite wall. And the twelve new parts in the glass wall replaces six of the old windows.

**Text: Espen Tollefsen  
Photos: Espen Tollefsen & Peters Studios**

*St. Konrad*



**Glaswand für die kath. Kirche St. Konrad nach Entwurf von Espen Tollefsen**



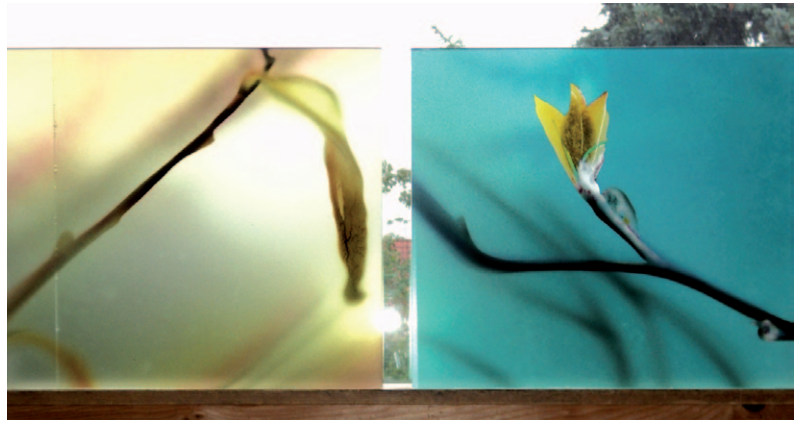
*Design*

I wanted to continue the colours and textures from the old glasses. The organic structure in the old glasses against organic photographs in the new glasses. So I photographed details from a small bush during different seasons and lighting conditions to make a year seen in the twelve new glasses. By enlarging small parts of the bush and keeping the surroundings blurred and out of focus it becomes more abstract, but it also underlines the depth in the subject. The backlighted and blurred bush gives an extra depth when transferred to glass, and brings back the light to the subject. The shifting light through the glass strengthen the different seasons in the image, and also strengthen the movements in the composition.





Painting in the studio



First samples

Braunschweig Architekten was responsible for project management, and together with Glasmalerei Peters we decided to use airbrush to transfer the image to the glasses because it is a perfect match with the soft and out-of-focus areas in the photographs. The quality of the ceramic enamel colours used with airbrush was also important because they corresponded with the colours in the photographs. Glasmalerei Peters also used sandblast to limit visibility and to retain highlight areas in the image.



## Künstler: Espen Tollefsen



### Espen Tollefsen

Torggata 11  
0181 Oslo / Norway  
post@espentollefsen.no  
www.espentollefsen.no

### BIOGRAFIE

born 1963 in Narvik, and lives in Oslo, Norway.

Educated as a photographer in Trondheim.

Works with art projects based on photography and photographic illustration. The starting point for much of his artwork can be found in his origins by the rugged seashores within the Arctic circle. His affinity with landscape is evident in his work.

He works to commission and independently, with architects, designers and art directors using a wide range of techniques. His clients list includes schools, churches, hospitals, shipping companies, hurtigruta, railways, hotels and company headquarters.

In Oslo, he is a member of Lavetthuset Artists' Studios on Hovedøya, an island in the Oslo fjord. And the Tollefsen family runs Atelier Nøss, a summer gallery and artists' studio on Andøya, Vesterålen, Norway. Member of NBK- Norwegian association of visual artists.